



Chamber End Fold, Grassington, Skipton, BD23 5BA

Asking Price £350,000

- TWO BED COTTAGE
- CURRENT HOLIDAY LET
- MULTI FUEL STOVE
- CLOSE TO AMENITIES
- EARLY VIEWING A MUST
- CHARM AND CHARACTER
- INGLE NOOK FIREPLACE
- SOUGHT AFTER LOCATION
- CHAIN FREE
- SEE OUR PROPERTY VIDEO BELOW THE DETAILS

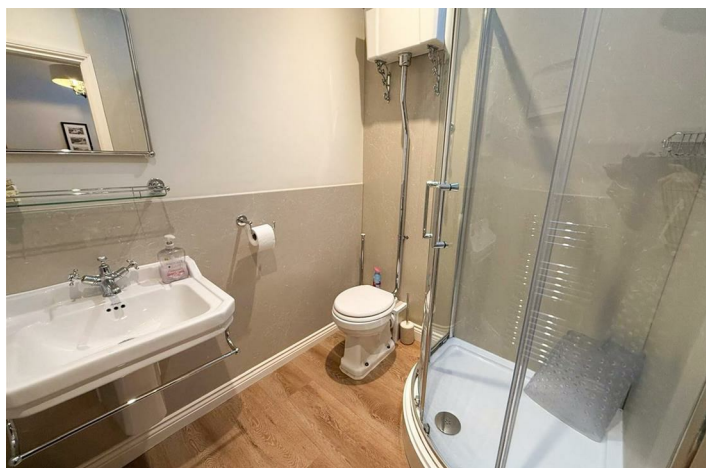


# Chamber End Fold, Grassington, Skipton BD23 5BA

Nestled along one of the village's most photographed cobbled streets, this delightful stone-built two-bedroom cottage exudes character and charm. Currently run as a highly successful holiday let, but equally suited as a primary residence or a second home, this property offers a rare blend of warmth and versatility. With its idyllic setting, timeless charm, and prime location, this picture-perfect cottage is a rare gem worth exploring. Don't miss the chance to view this captivating property!



Council Tax Band: Exempt



## PROPERTY DETAILS

Nestled along one of the village's most photographed cobbled streets, this delightful stone-built two-bedroom cottage exudes character and charm. Passed down through the family it has recently thrived as a highly successful holiday let, and it's easy to see why. Whether you're seeking a picturesque primary residence, a lucrative business opportunity, or a serene second home, this property offers a rare blend of warmth and versatility.

As you step through the inviting front door, you are welcomed into a beautifully appointed living/dining room. This space features a striking inglenook-style stone fireplace with a multi-fuel stove, perfect for cosy evenings. A bespoke seating nook on one side and stone display shelves on the other, both accentuated by subtle concealed lighting, add unique charm to the room. Exposed beams and a deep-set windowsill enhance the cottage's rustic appeal, while an enclosed staircase leads you gracefully to the upper floor.

The kitchen, situated at the rear, is both modern and practical, with Yorkshire stone-flagged flooring and a decorative stone niche. A rear-facing window floods the space with natural light, making it a pleasant spot for meal preparation.

Upstairs, a spacious landing with built-in storage cupboards and a feature ceiling with a Velux window leads to two inviting bedrooms. The master bedroom boasts two front-facing windows, filling the room with light, while the second bedroom features a charming mullion window and ample space. The contemporary shower room is a highlight, with sleek fittings and a feature ceiling with another Velux window, creating a spa-like atmosphere.

The cottage is tucked away just off the Main Street on the charming, cobbled Chamber End Fold, steps from the vibrant village square. The village itself is a hive of activity, regularly hosting community events and offering a range of delightful amenities, including independent shops, cosy coffee houses, traditional pubs, and acclaimed restaurants. Fans of the TV series *All Creatures Great and Small* may recognize the area, as it has served as a filming location. A superb local bus service ensures connectivity, and the stunning countryside surrounding the village provides endless opportunities for scenic walks.

Just nine miles away lies the bustling market town of Skipton, offering access to larger business hubs across North and West Yorkshire. With its idyllic setting, timeless charm, and prime location, this picture-perfect cottage is a rare gem worth exploring. Don't miss the chance to view this captivating property!

## ADDITIONAL INFORMATION

Mains water  
Mains electricity  
Mains sewage  
Electric heating





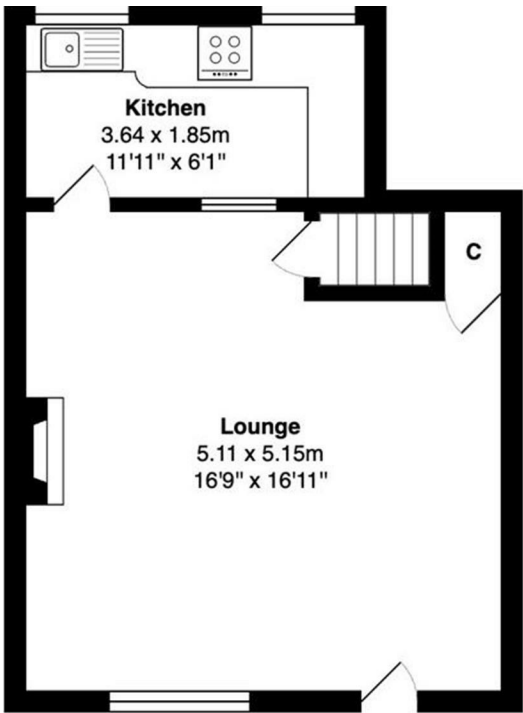
## Viewings

Viewings by arrangement only. Call 01756 753341 to make an appointment.

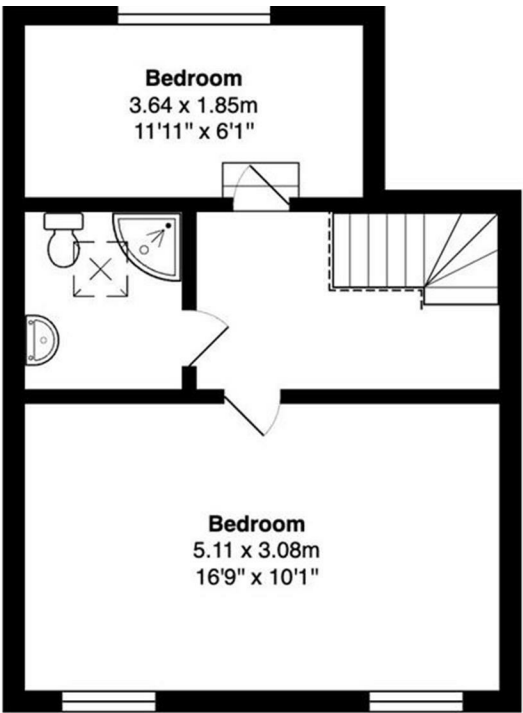
## EPC Rating:

F

Energy Efficiency Rating		
	Current	Potential
Very energy efficient - lower running costs		
(92 plus) <b>A</b>		<b>94</b>
(81-91) <b>B</b>		
(69-80) <b>C</b>		
(55-68) <b>D</b>		
(39-54) <b>E</b>		
(21-38) <b>F</b>		
(1-20) <b>G</b>		
Not energy efficient - higher running costs		
England & Wales		EU Directive 2002/91/EC 



Ground Floor



First Floor

Total Area: 67.3 m<sup>2</sup> ... 724 ft<sup>2</sup>

All measurements are approximate and for display purposes only